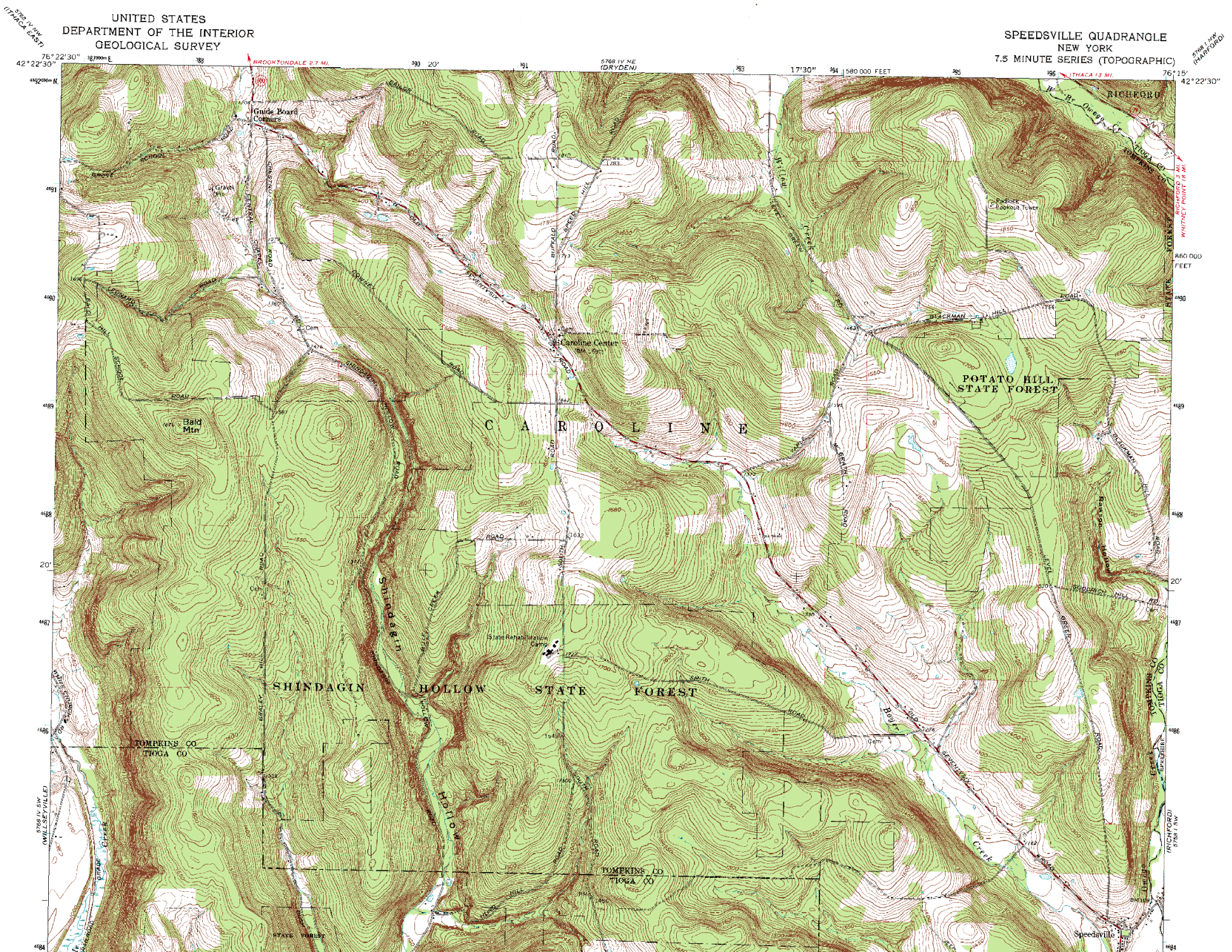
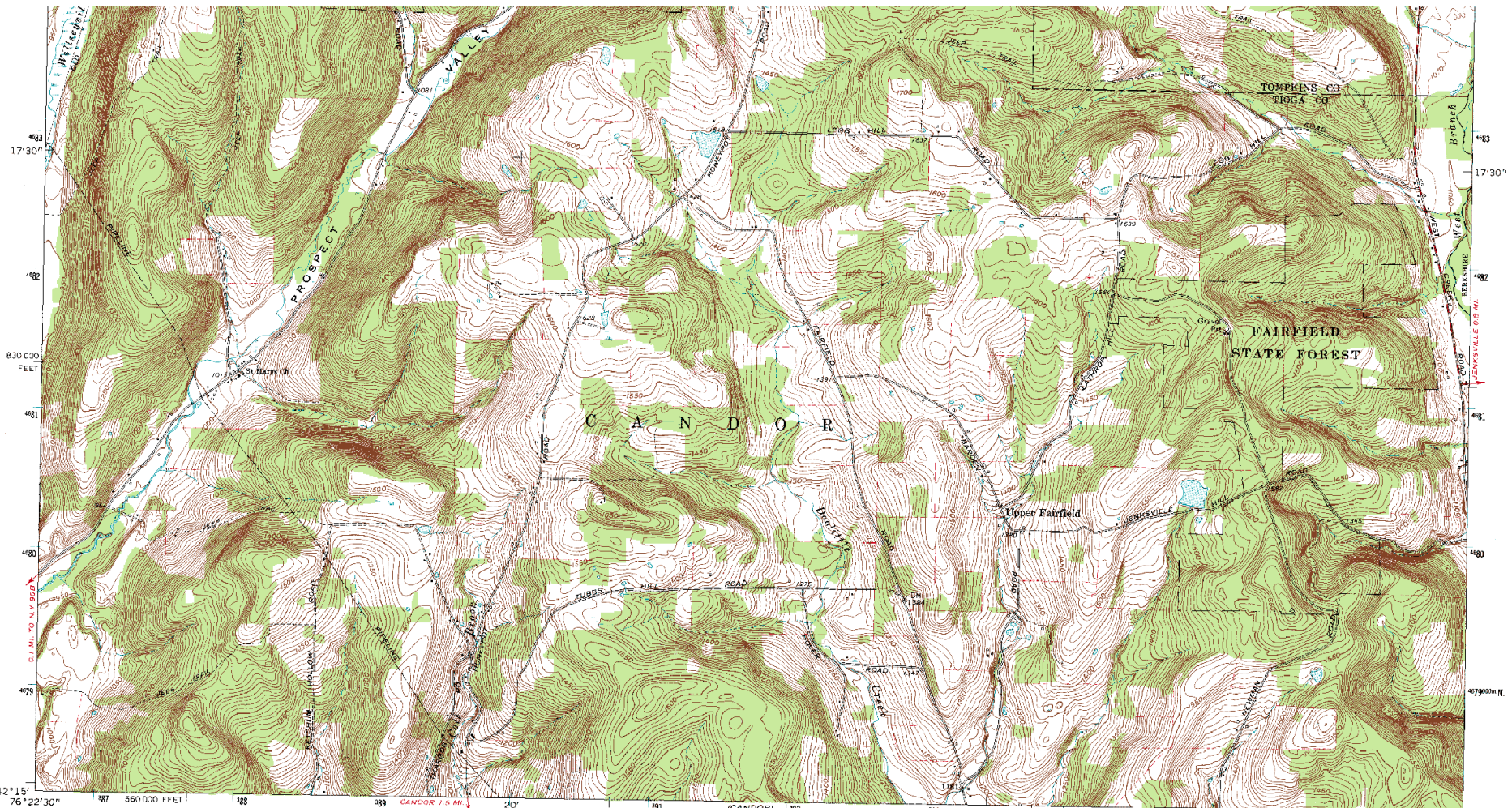


UNITED STATES
DEPARTMENT OF THE INTERIOR
GEOLOGICAL SURVEY

SPEEDSVILLE QUADRANGLE
NEW YORK
7.5 MINUTE SERIES (TOPOGRAPHIC)

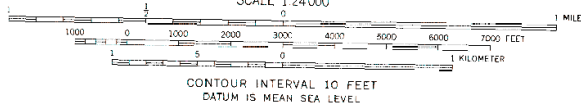
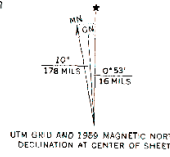


76° 22' 30" 1870000 E 390 20' 191 5768 IV NE (DRYDEN) 393 17' 30" 394 580 000 FEET 395 42° 22' 30" 492000 N ITHACA 13 MI RICHFORD 3 MI WHITNEY POINT 18 MI



Mapped, edited, and published by the Geological Survey
Revised in cooperation with New York Department of Transportation
Control by USGS and US&GS

Topography by photogrammetric methods from aerial photographs taken 1944. Field checked 1949. Revised from aerial photographs taken 1968. Field checked 1969
Polyconic projection. 1927 North American datum 10,000-foot grid based on New York coordinate system, central zone
1000 meter Universal Transverse Mercator grid ticks, zone 18, shown in blue
Fine red dashed lines indicate selected fence and field lines where generally visible on aerial photographs. This information is unchecked



THIS MAP COMPLIES WITH NATIONAL MAP ACCURACY STANDARDS
FOR SALE BY U. S. GEOLOGICAL SURVEY
DENVER, COLORADO 80225, OR RESTON, VIRGINIA 22092
A FOLDER DESCRIBING TOPOGRAPHIC MAPS AND SYMBOLS IS AVAILABLE ON REQUEST

Map photoinspected 1976
No major culture or drainage changes observed

ROAD CLASSIFICATION
Secondary highway, all weather, hard surface
Light-duty road, all weather, improved surface
Unimproved road, fair or dry weather
State Route

SPEEDSVILLE, N. Y.
N4215—W7615/7.5
1969
PHOTOINSPECTED 1976
AMS 9768 IV SE—SERIES V821